

MONTHLY MEMBERSHIP PROGRESS REPORT

District 316 D

Results as of: 5/31/2025

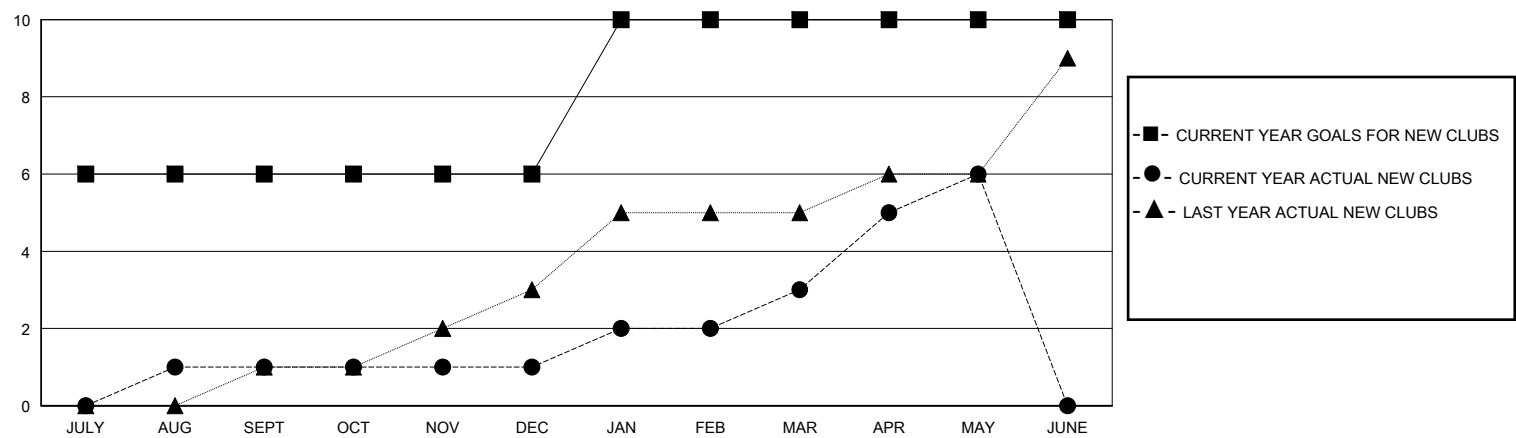
GMT:

LOCATION INDIA

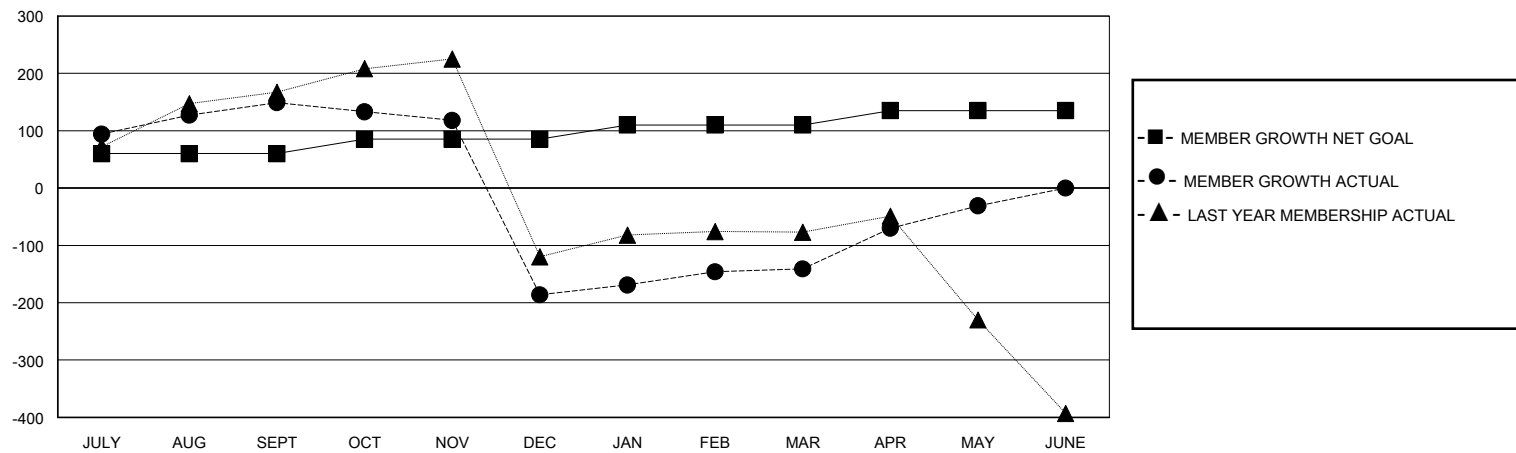
GMT CA

| Clubs                 |               |           |               | Members               |                        |                      |  |
|-----------------------|---------------|-----------|---------------|-----------------------|------------------------|----------------------|--|
| RESULTS FOR 2024-2025 |               |           |               | RESULTS FOR 2024-2025 |                        |                      |  |
| QUARTER               | NEW CLUB GOAL | NEW CLUBS | DROPPED CLUBS | QUARTER               | MEMBER GROWTH NET GOAL | MEMBER GROWTH ACTUAL | DROPPED MEMBERS ACTUAL (including transfers) |
| JULY/AUG/SEPT         | 6             | 1         | 1             | JULY/AUG/SEPT         | 60                     | 180                  | 17   |
| OCT/NOV/DEC           | 0             | 0         | 8             | OCT/NOV/DEC           | 25                     | 26                   | 358  |
| JAN/FEB/MAR           | 4             | 2         | 4             | JAN/FEB/MAR           | 25                     | 144                  | 88   |
| APR/MAY/JUNE          | 0             | 3         | 0             | APR/MAY/JUNE          | 25                     | 131                  | 14   |

GOALS AND ACTUAL NEW CLUBS CUMULATIVE



GOALS AND ACTUAL MEMBERS CUMULATIVE



|                   |   |                                 |                |
|-------------------|---|---------------------------------|----------------|
| DROPPED CLUBS: 13 | 67 CLUBS OF 109 ADDED 1 OR MORE NEW MEMBERS               | GENDER DISTRIBUTION             |                |
|                   |   | MALE                            | 2,344 (80.08%) |
|                   |   | FEMALE                          | 583 (19.92%)   |
| DROPPED MEMBERS   | <a href="#">CLICK HERE FOR CUMULATIVE MEMBERSHIP DATA</a> | TOTAL FAMILY UNIT MEMBERS       |                |
| DECEASED          |   | 1,075                           |                |
| CLUB CANCELLED    |   | FAMILY MEMBERS PAYING HALF DUES |                |
| OTHER             |   | 682                             |                |
| TOTAL             |   |                                 |                |
|                   |   |                                 |                |